

NIBIR KC - KR - KRB

WALL- HUNG CONDENSING BOILER WITH INSTANT PRODUCTION OF HOT WATER (HEATING ONLY) - WALL- HUNG CONDENSING BOILER WITH INSTANT PRODUCTION OF DOMESTIC HOT WATER (HEATING ONLY).

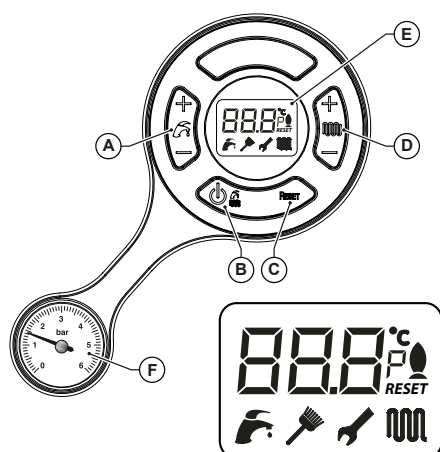


- ▶ Modulation ratio 1:5
- ▶ Aluminium heat exchanger
- ▶ Possibility of connecting with external probe

Available model

24
kW

Model	Type of gas	Code	Rated heat output (Prated) kW	Energy efficiency class		Measures: L x H x P mm	Gross weight Kg
				Space heating	Water heating		
NIBIR KC 24	METANO	KNFXX2CR24	20	A	A XL	400x700x250	26
	GPL	KNFXX6CR24					
NIBIR KR 24	METANO	KNFXX2RR24	20	A	-	400x700x250	25.2
	GPL	KNFXX6RR24					
NIBIR KRB 24	METANO	KNFXX2RU24	20	A	-	400x700x250	25.4
	GPL	KNFXX6RU24					



- A. Domestic hot water setting (+/- DHW)
- B. Selection of working state and confirmation of parameters
- C. Alarm reset and return to the home page in the selection of the parameters
- D. Central heating parameters and settings (+/- WATER HEATING) LCD display
- E. Water pressure gauge heating system



TECHNICAL SPECIFICATIONS			KC 24	KR 24	KRB 24
Type			B23-C13-C13X-C33-C43-C53-C63-C83	B23-C13-C13X-C33-C43-C53-C63-C83	B23-C13-C13X-C33-C43-C53-C63-C83
Gas type			II2H3P	II2H3P	II2H3P
Rated heat output (Prated)		kW	20	20	20
Seasonal space heating energy efficiency (η_s)		%	93	93	93
Seasonal space heating energy efficiency class		-	A	A	A
Load profile stated		-	XL	-	-
Seasonal water heating energy efficiency (η_{wh})		%	85	-	-
Seasonal water heating energy efficiency class		-	A	-	-
Nominal heat input (Qn)		kW	20.0	20.0	20.0
Reduced heat input (Qr)		kW	5.0	5.0	5.0
Nominal heat output (80-60°C) (Pn)		kW	19.5	19.5	19.5
Minimum heat output (80-60°C) (Pr)		kW	4.8	4.8	4.8
Nominal heat output (50-30°C)		kW	21.0	21.0	21.0
Minimum heat output (50-30°C)		kW	5.4	5.4	5.4
Useful efficiency at nominal heat input (80-60°C)		%	97.3	97.3	97.3
Useful efficiency at nominal heat output (50-30°C)		%	105.3	105.3	105.3
Useful efficiency at 30°C		%	109.6	109.6	109.6
CH maximum working pressure		bar	0.5-3.0	0.5-3.0	0.5-3.0
CH temperature range		°C	20-78	20-78	20-78
CH maximum working temperature		°C	83	83	83
DHW nominal heat output		kW	24.0	24.0	24.0
DHW minimum heat output		kW	5.0	5.0	5.0
DHW nominal heat output (ΔT 30°C)		kW	23.4	23.4	23.4
DHW minimum heat output (ΔT 30°C)		kW	3.0	3.0	3.0
Operating domestic circuit pressure (min-max)		bar	0.5-6.0	-	-
DHW specific heat output ΔT 25 K		l/min	14.6	-	-
DHW specific heat output ΔT 30 K		l/min	12.2	-	-
DHW qualification		-	★★	-	-
DHW temperature range		°C	35-57	35-65 (*)	35-65 (*)
DHW maximum working temperature		°C	62	65 (*)	65 (*)
NOx emission class		-	6	6	6
Casing heat loss with burner on at nominal heat input		%	0.64	0.64	0.64
Casing heat loss with burner off		%	0.255	0.255	0.255
Chimney heat loss with burner on at nominal heat input		%	2.06	2.06	2.06
ΔT Air-flue at nominal heat input		°C	47.7	47.7	47.7
Flue gas flow at nominal heat input		g/s	10.7	10.7	10.7
CO ₂ at nominal heat input	Methane	%	9.3 ± 0.3	9.3 ± 0.3	9.3 ± 0.3
CO ₂ a at nominal heat input	Propane	%	10 ± 0.3	10 ± 0.3	10 ± 0.3
Supply pressure	Methane	mbar	20	20	20
Supply pressure	Propane	mbar	37	37	37
Power supply voltage/frequency		V/Hz	230/50	230/50	230/50
Maximum power absorption		W	85	85	85
Circulator absorption		W	41	41	41
Electric protection rating		IP	IPX4D	IPX4D	IPX4D
Diameter air intake pipe / flue flow		mm	80+80 100/60	80+80 100/60	80+80 100/60

* with tank probe connected

